



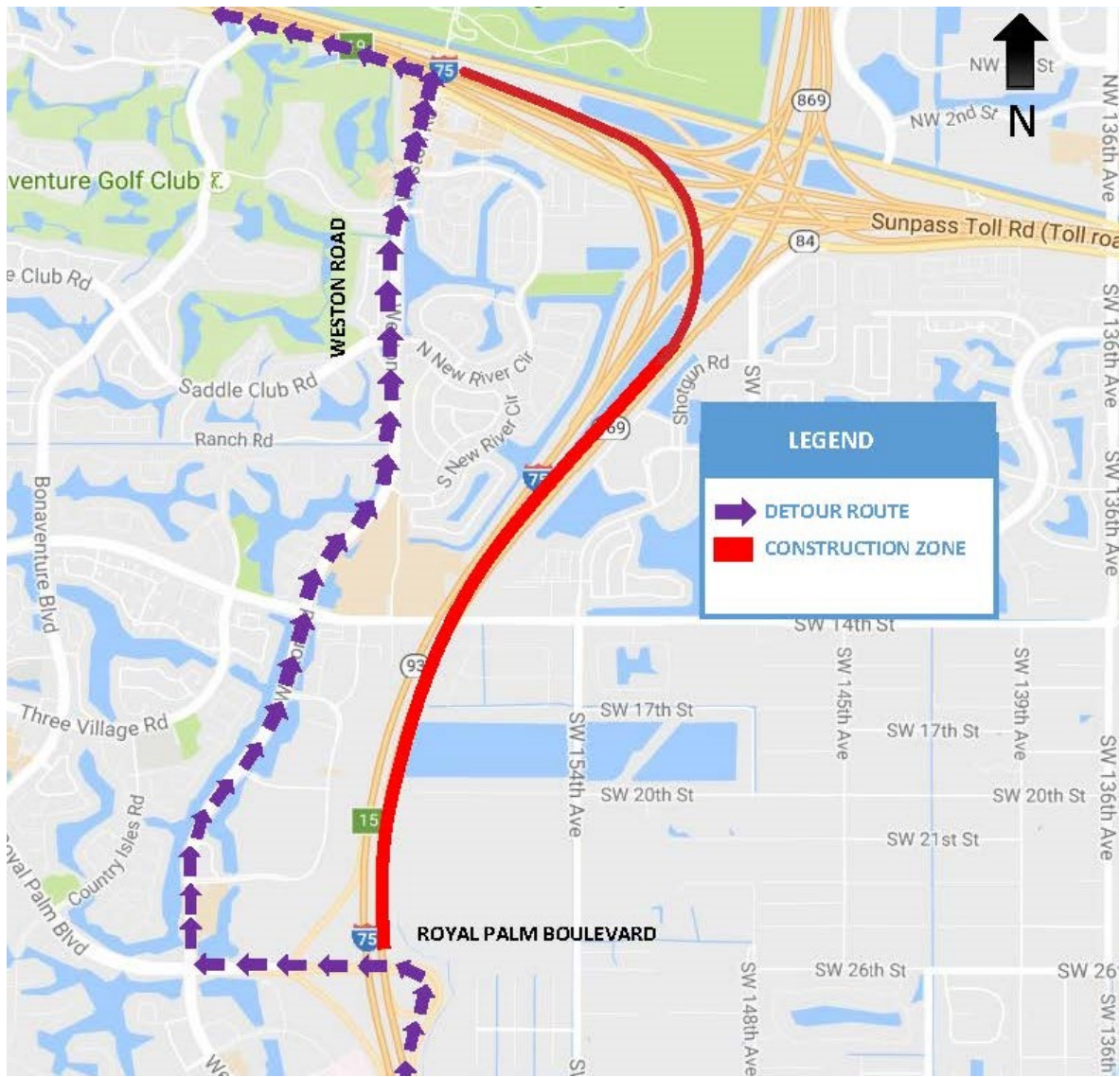
CONSTRUCTION UPDATE

Full Closures of Northbound I-75 North of Royal Palm Boulevard Scheduled for Wednesday, November 30

The Florida Department of Transportation (FDOT) is scheduled to close all northbound lanes of I-75 from north of Royal Palm Boulevard to west of the Sawgrass Expressway interchange to continue roadway construction for the 75 Express Lanes project. In order to perform the work safely, traffic will be detoured during the following dates and times:

All northbound lanes of I-75 from north of Royal Palm Boulevard to west of the Sawgrass Expressway interchange will be closed from 11 p.m. Wednesday, November 30 to 4:30 a.m. Thursday, December 1. Motorists will be detoured to exit at Royal Palm Boulevard (Exit 15), go west on Royal Palm Boulevard to Weston Road, north on Weston Road to State Road 84, and west on SR 84 to re-enter I-75 northbound. Please follow the posted detour. *Please note, I-75 northbound to Sawgrass Expressway northbound and I-595 eastbound will remain open during this closure.

Please note that this schedule may change due to inclement weather or other unexpected conditions.



CONTACT

For more information or to receive updates, please contact the project Public Information Officer, Gerdy St. Louis, at 954.548.2754 or via e-mail at gerdy@iscprgroup.com

STAY CONNECTED

 75-express.com

 [@myfdot_sefl](https://twitter.com/myfdot_sefl)

 www.fl511.com

 smartsunguide.com